



K.R. MANGALAM UNIVERSITY
THE COMPLETE WORLD OF EDUCATION

Nurturing Eco-Conscious Behavior: Taking a Step Towards Environment Sustainability



Best Practice-1

Eco-Friendly Campus

01

26.4 Acres Lush Green Campus with more than 3000 Trees and plants



02

Solar Panel with Total Capacity: 41850 units/Month



03

70+ CNG Buses



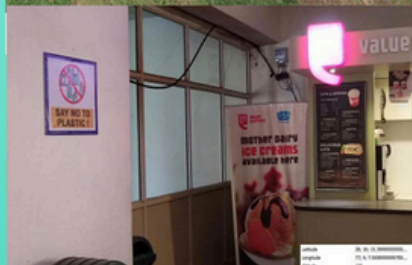
04

In-House Nursery



05

Water Conservation: 17 Rainwater Harvesting Pits



06

100% Plastic Free Campus



07

1 Lakh Ltr Capacity of STP for plant irrigation



08

Carbon Footprint of KRMU 1.66 which is much lower than India & Global Average

Objective



To inculcate a sense of responsibility and a moral duty among students, individuals and communities to foster the behaviour for preservation and conservation of environment.

Eco-Friendly Behaviour

- Eco-Friendly Behaviour
- Centralized 60 CNG Buses & Carpooling
- Solar Energy & Energy Conservation
- Power-Efficient Equipment
- Digital Media for Paper Reduction
- Sustainability Center for Excellence
- In-House Nursery & Green House
- Organic Orchard: Paper Recycling Plant
- Zero Plastic Policy
- Environmental Sustainability Awareness 40+
- Tree Plantation
- QR Coding of Plants and Trees



Facilities for Alternate Sources of Energy and Energy Conservation Measures



Solar Panel



- 984 Solar Panels
- 310 KW Capacity
- 41850 units/month
- Wheeling to the Grid

Bio-Gas Plant



- 2 KLD Capacity



LED Lights



- 17384 KWH annual power requirement for lighting met.
- 2111 LEDs Installed in KRMU Campus

Sensor Based Energy



- All Washrooms
- All Entry gates have Sensor Based operation

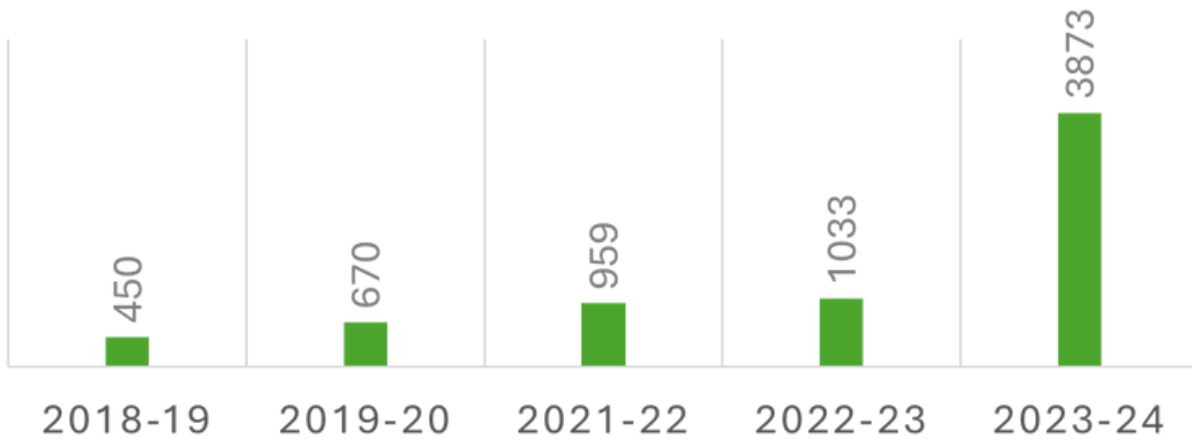


Sustainable Practices

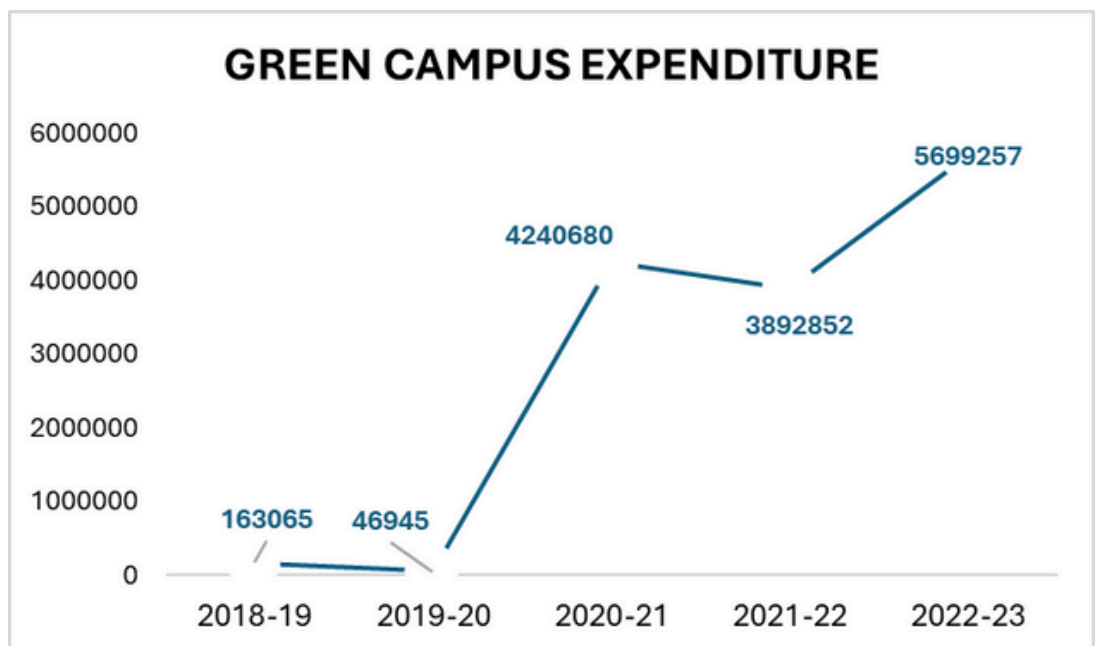


TREE PLANTATION

NO. OF PLANTS & TREES



GREEN CAMPUS EXPENDITURE



Carbon Footprinting Calculation

2023-24



FUEL ENGINE CATEGORY & TYPES	Commutating Size	Price PER DAY BASIS	ANNUAL BASIS (260 Days a year)
Private Buses, Cab, Private vehicles: DIESEL ENGINE	4,5 max 20 at a time	800 RS/DAY INC.RETURN	208000 RS.
Autos, Private Vehicles: PETROL ENGINE	4,5 max 20 at a time	600 RS/DAY INC.RETURN	156000 RS.
Public Transport CNG BUSES	20	100 RS/DAY INC.RETURN	26000 RS.
SELF University Transport CNG BUSES	40	73 RS/DAY INC.RETURN	18980 RS.

S.N o.	Source	Diesel Generator Consumption	Total Co2 Emission Annual
1	DG Set	275 Litre.	742.5
	in tonnes Total Annual		0.505

FUEL ENGINE CATEGORY	TOTAL KM COVERED IN SINGLE MONTH	PER 100 KM FUEL CONSUMPTION	For Single Bus	BUS COUNT	Annual CO2 Emissions
DIESEL ENGINE	5000	11 LITRES	37 ton Annually	43	1362
CNG BUS	5000	10 KG	32 ton annually	43	1232

Saving earned by using CNG bus annually	Reduction of 130 tons of CO2 Emissions Annually
Saving earned by using CNG bus 4 year	Reduction of 600 tons of CO2 Emissions Annually

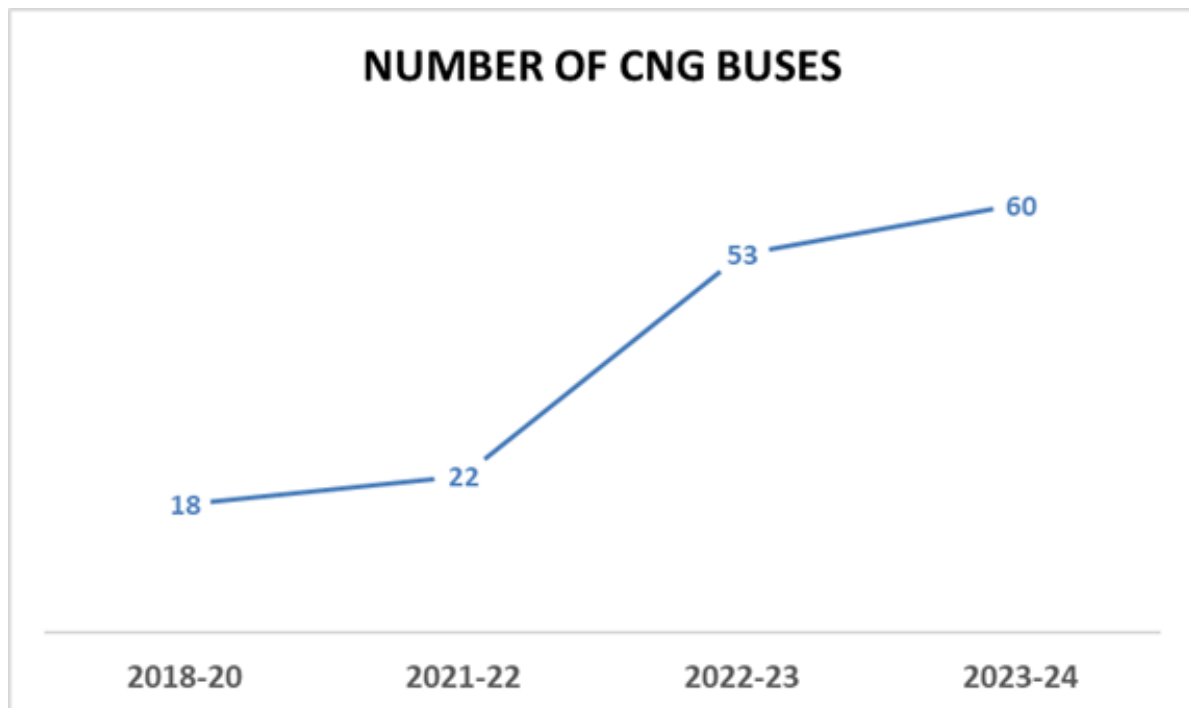
Sustainable Practices



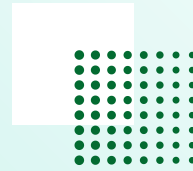
CARBON FOOTPRINT CALCULATION (2023-24)

Country	Carbon Footprint per Person (Tonnes CO ₂ e)
India	1.8-2.0
KRMU	1.66
Global Average	4

CNG BUSES



Sustainable Practices by SOAS



Zero Use of Chemical Fertilizers and Pesticides in Field Crops and Horticulture Farming



✓ Organic Farming

Poly House and Shade Net ✓



✓ Mushroom Cultivation

Poly House and Shade Net ✓



Sustainable Practices by

SMAS

- Open Elective Course on Chemical Hazards of 03 credits with 45 hrs engagement is offered pan university
- Orientation sessions conducted for students & staff regarding handling of chemicals
- Chemical waste management to maintain Environmental Sustainability



SOED



- SOED collaborated with Save Aravali Trust to inculcate the values among students to conserve the environment.
- Students of SOED have completed the field project:
 1. Protection and Conservation of Species in Aravali Range, Faridabad
 2. Wastewater Management

Sustainable Practices by

SOAD

SOAD has introduced green walls on the 1st, 2nd, and 3rd floors of the C Block lobby. These lush installations not only regulate indoor temperatures and enhance the microclimate but also bring a breath of fresh greenery into our built environment.



SOED

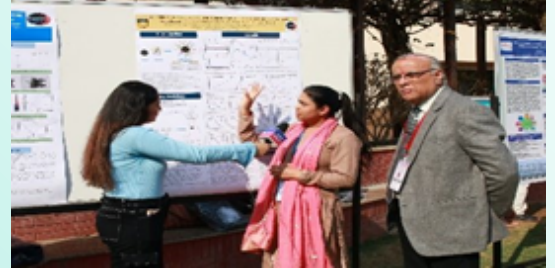


- SOED collaborated with Save Aravali Trust to inculcate the values among students to conserve the environment.
- Students of SOED have completed the field project:
 1. Protection and Conservation of Species in Aravali Range, Faridabad
 2. Wastewater Management

Sustainable Practices by

SBAS

- Events conducted by SBAS on environmental sustainability = 09
- Projects conducted by graduated students on Environmental Sustainability = 05
- Conference on Advanced Materials for Green Chemistry and Sustainable Environment, February 15-16, 2024
- Research Articles on Sustainability = 30
- Offering Minors in Environmental Studies (2023 Onwards)



SOMC

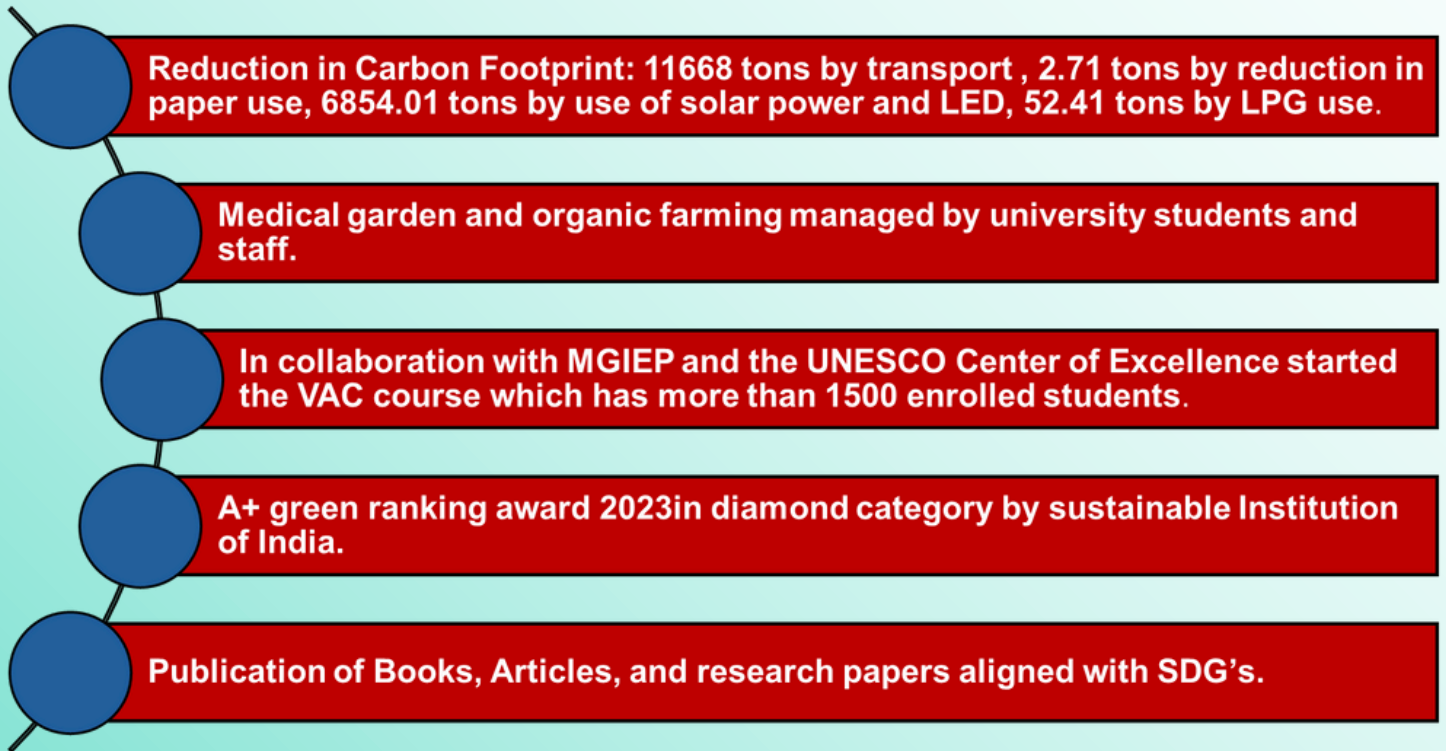
Best Out of Waste Making: The assignment was given to explain green marketing and packaging in course Marketing Management. SOMC plan to take this initiative further with support of Indian Institute of Packaging



Glimpses of Activities



Outcome & Impact



Publications aligned with SDG as per SCOPUS database (1 Jan 2014 to 30 Sep 2024)



Outcome & Impact

K.R. Mangalam University has published 17 Books on various Sustainable Development Goals



Awards & Recognition for Sustainable Practice

SUSTAINABLE INSTITUTIONS OF INDIA
GREEN RANKINGS 2023

Certificate of Excellence

IN PURSUIT OF EXCELLENCE TOWARDS PRACTICING
SUSTAINABLE EDUCATION, THIS CERTIFICATE IS AWARDED TO

K R MANGALAM UNIVERSITY

Institutional Grade : **A+**
Institutional Band / Category : **Diamond**

R
World Institutional
RANKING

[Signature]
Executive President

30 March 2023

SUSTAINABLE INSTITUTIONS OF INDIA
GREEN RANKINGS 2024

Certificate of Excellence

IN PURSUIT OF EXCELLENCE TOWARDS PRACTICING SUSTAINABLE
EDUCATION, THIS CERTIFICATE IS AWARDED TO

K R MANGALAM UNIVERSITY, GURUGRAM

Institutional Band / Category : **Gold**

R
World Institutional
RANKING

[Signature]
Executive President

Sustainable Green Ranking- Diamond and Gold in 2023 and 2024

